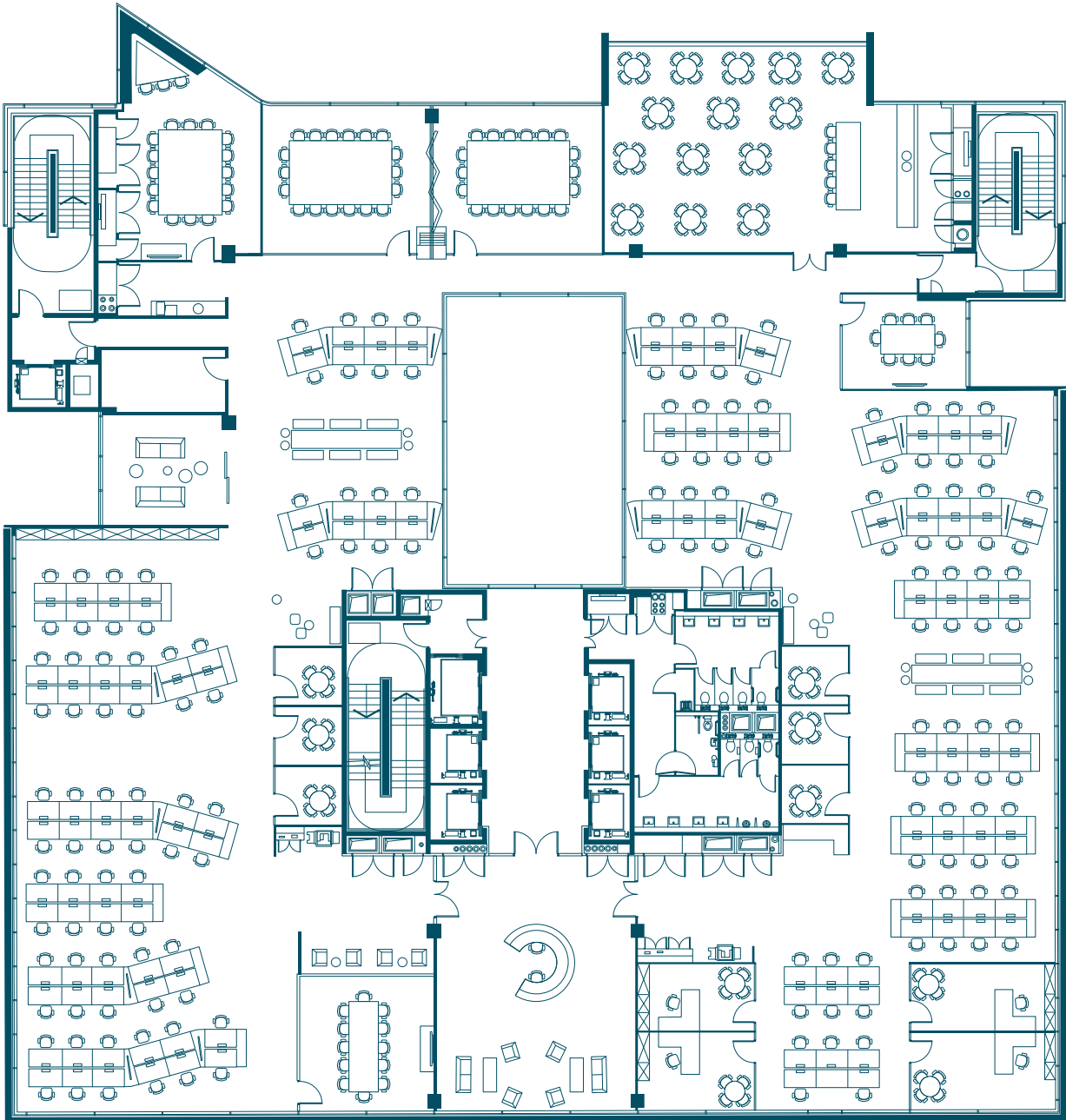
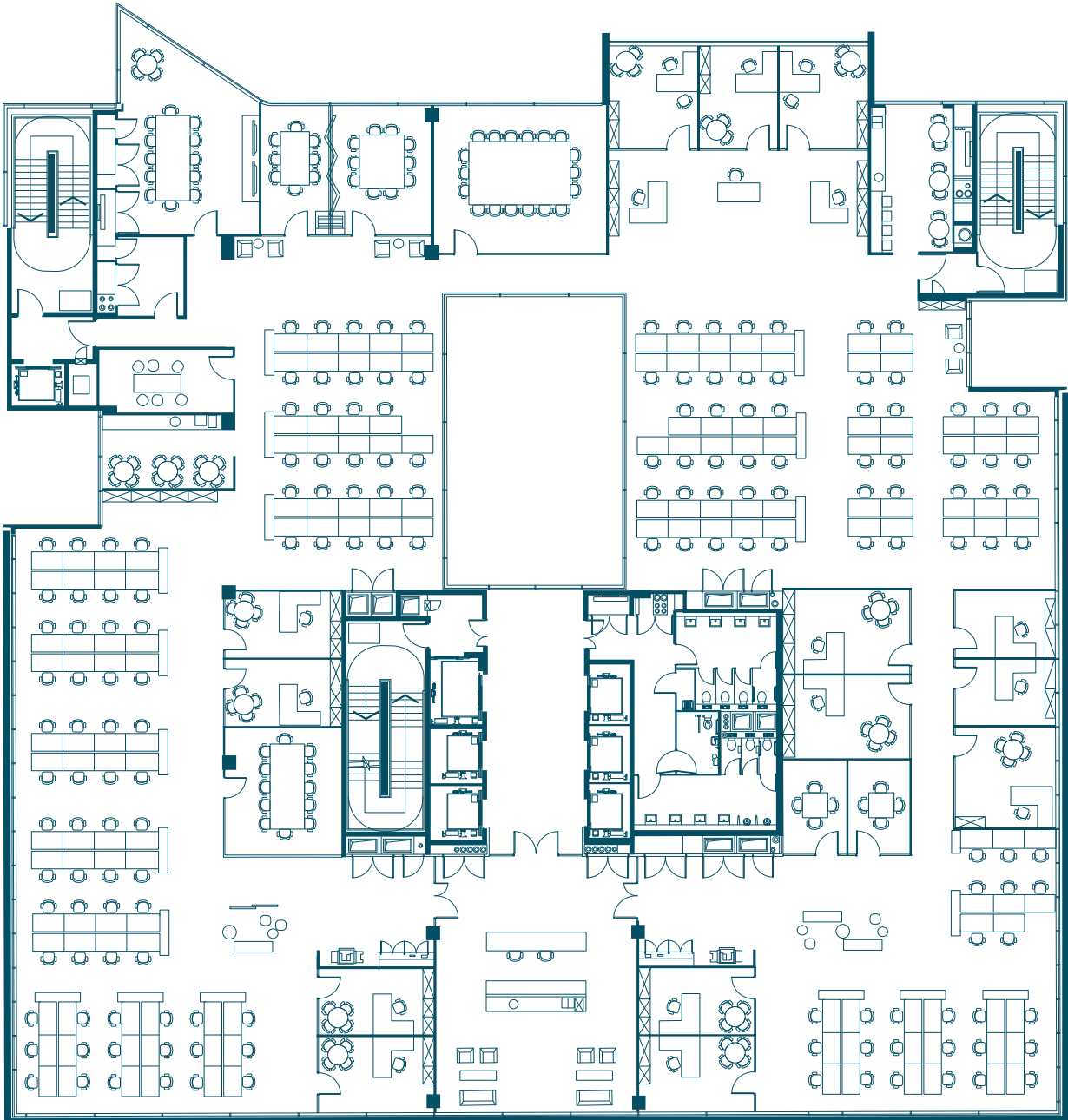


TECH LAYOUT



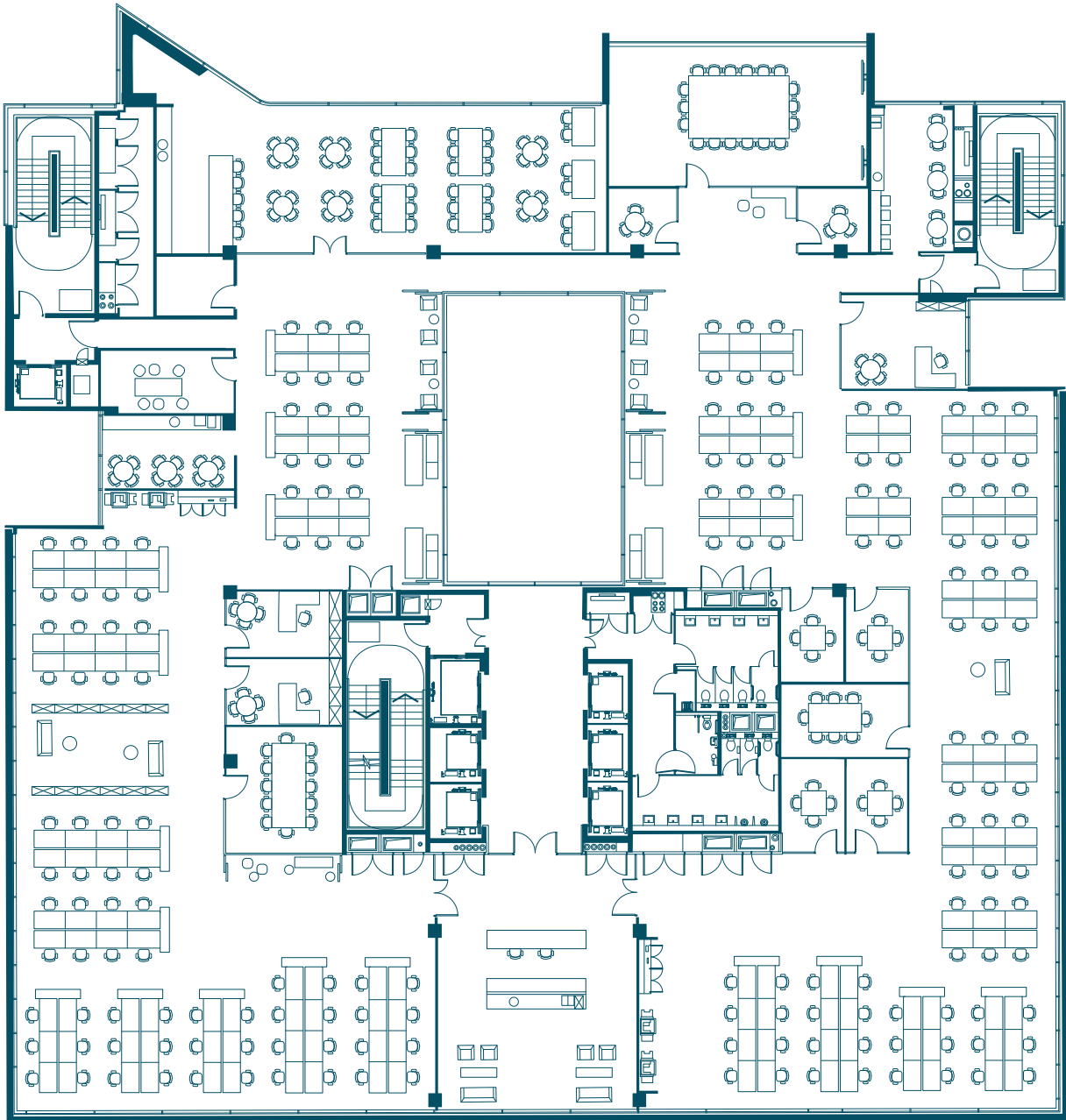
- | | | | |
|--------------------------|-----|-----------------------------------|---|
| » Reception | 1 | » Huddle Room | 6 |
| » Cellular Offices | 4 | » Informal Meeting Room | 1 |
| » Open Plan Workstations | 164 | » Canteen | 1 |
| » 18 Person Meeting Room | 2 | » Coffee Points | 2 |
| » 16 Person Meeting Room | 1 | » Comms Room | 1 |
| » 12 Person Meeting Room | 1 | » Print Areas | 2 |
| » 8 Person Meeting Room | 1 | » Collaboration & Breakout Spaces | 6 |

CORPORATE LAYOUT



- | | | | |
|--------------------------|-----|-----------------------------------|---|
| » Reception | 1 | » 4 Person Meeting Room | 2 |
| » Cellular Offices | 14 | » Huddle Room | 2 |
| » Open Plan Workstations | 166 | » Informal Meeting Room | 2 |
| » 18 Person Meeting Room | 1 | » Coffee Points | 3 |
| » 12 Person Meeting Room | 2 | » Comms Room | 1 |
| » 10 Person Meeting Room | 1 | » Print Areas | 2 |
| » 8 Person Meeting Room | 1 | » Collaboration & Breakout Spaces | 4 |

FINANCIAL LAYOUT



- | | | | |
|--------------------------|-----|-----------------------------------|---|
| » Reception | 1 | » Informal Meeting Room | 1 |
| » Cellular Offices | 3 | » Informal Meeting Spaces | 4 |
| » Open Plan Workstations | 176 | » Canteen | 1 |
| » 18 Person Meeting Room | 1 | » Coffee Points | 3 |
| » 12 Person Meeting Room | 1 | » Comms Room | 1 |
| » 8 Person Meeting Room | 1 | » Print Areas | 2 |
| » 4 Person Meeting Room | 4 | » Collaboration & Breakout Spaces | 4 |
| » Huddle Room | 2 | | |